

Listing Inventory July 2020

Click on the Interactive Links Below

[TO SEARCH LOCAL LISTINGS](#)

[INVESTMENT LISTINGS](#)

[FOR SALE LISTINGS](#)

[OFFICE LEASE LISTINGS](#)

[RETAIL LEASE LISTINGS](#)

[INDUSTRIAL LEASE LISTINGS](#)

[LAND LISTINGS](#)

1120 P Street, Unit 1 & 2



Individual Members of:



Wells Fargo Center
1248 'O' Street, Suite 550
Lincoln, NE 68508
402 441 5800
naifmarealty.com



4840 Doris Bair Cir.

For Sale
\$1,428,000
21,000 SF (can be sold as two units)

Chris Vasek

[Link to MRCIE #30509152](#)



4141 N. 27th Street

For Sale
\$999,999
10,000 SF
Net leased to national tenant

Chris Vasek



4800 Doris Bair Cir.

For Sale
\$2,550,000
39,000 SF

Chris Vasek

[Link to MRCIE #30512657](#)



2801 S, 48th Street

For Sale
\$1,952,727
3,434 SF

Tom Graf

[Link to MRCIE #30624410](#)



2900 N. 36th Street

For Sale
\$630,000
12,023 SF

Mattie Wenzl/Chris Vasek

[Link to MRCIE #30623656](#)

For Sale Listings

July 2020

[Return to Home Page](#)



2019 'P' Street

For Sale
\$710,000
3,500 SF
Mattie Wenzl/Richard Meginnis
[Link to MRCIE #30515909](#)



500 N. 66th Street

For Sale
\$1,869,000
20,482 SF
Sally DeLair/Marc Hausmann
[Link to MRCIE #30451251](#)



2230 'Y' Street

For Sale
\$325,000
3,960 SF
Jared Froehlich/Scott Richardson
[Link to MRCIE #30567854](#)



220 Oakcreek Drive

For Sale
\$1,199,000
24,088 SF
Mike Ball/Marc Hausmann
[Link to MRCIE #30435367](#)



1400 N. 48th Street

For Sale
\$1,395,000
9,840 SF
Mike Ball/Tom Graf
[Link to MRCIE #30333349](#)



100 N. 12th Street

For Sale
\$675,000
5,711 SF
Tom Graf
[Link to MRCIE #30111390](#)



252 N. 134th Street

For Sale
\$6,999,500
107,330 SF
Chris Vasek



2935 Pine lake Rd, Ste. E & F

For Sale
Call For Offers
4,625 SF
Richard Meginnis/Jared Froehlich
[Link to MRCIE #30526114](#)

For Sale Listings

July 2020

[Return to Home Page](#)



6940 'A' Street

For Sale/Lease
\$1,500,000
\$12.00/SF NNN
7,536 SF

Richard Meginnis/Mattie Wenzl

[Link to MRCIE #30509612](#)



4141 N. 27th Street

For Sale
\$999,999
10,000 SF
5.8% CAP

Chris Vasek



7130 S. 29th Street

For Sale
\$1,650,000
14,401 SF

Jared Froehlich

[Link to MRCIE #30588065](#)



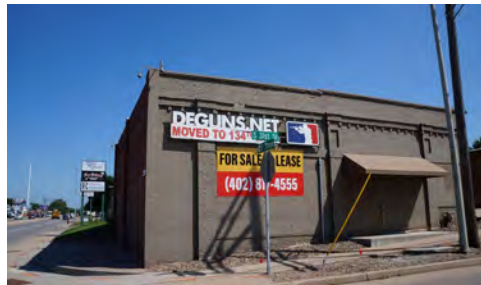
1230 Main Ave.

Crete, NE

For Sale
\$249,000
3,309 SF

Marc Hausmann/Sally DeLair

[Link to MRCIE #30504975](#)



3101 'O' Street

For Sale
\$279,900
1,890 SF

Chris Vasek

[Link to MRCIE #30497864](#)



4840 Doris Bair Circle

For Sale
\$1,428,000
21,000 SF (can be split into 10,500 SF)

Chris Vasek

[Link to MRCIE #30509152](#)



333 'C' Street

Palmyra, NE

For Sale (Includes Fixtures)
\$255,000
2,340 SF

Marc Hausmann/Sally DeLair

[Link to MRCIE #30500600](#)



1845 S. 1st Street

For Sale
\$848,000
9,200 SF

Chris Vasek/Mattie Wenzl

[Link to MRCIE #30483523](#)

For Sale Listings

July 2020

[Return to Home Page](#)



4001 Pioneer Woods Dr.

For Sale
\$1,700,000
8,232 SF

Chris Vasek/Mattie Wenzl

[Link to MRCIE #30628256](#)



6224 Logan Ave

For Sale
\$595,000
21,541 SF

Mike Ball

[Link to MRCIE #30572100](#)



1040 'O' Street

For Sale
Call For Offers
44,641 SF

Chris Vasek/Mattie Wenzl

[Link to MRCIE #30567338](#)



1120 P Street, Unit 1 & 2

For Sale
\$1,350,000
12,404 SF

Marc Hausmann/Sally DeLair

[Link to MRCIE #30627476](#)

Office Lease Listings

July 2020

[Return to Home Page](#)



1150 N. 83rd Street

For Sublease
\$16.00/SF NNN
10,000 SF

Richard Meginnis/Mike Ball

[Link to MRCIE #30570769](#)



Elizabeth Park Office 4433 S. 70th Street

For Lease
\$13.75/SF NNN
22,310 SF

Tom Graf/Richard Meginnis

[Link to MRCIE #30463586](#)



7130 S. 29th Street

For Lease
\$10.00-\$13.00/SF NNN
780-14,401 SF

Jared Froehlich

[Link to MRCIE #30588065](#)



2000 Q Street

For Lease
\$24.00/SF NNN
25,567 SF

Chris Vasek/Richard Meginnis

[Link to MRCIE #30561310](#)



Hruska 635 S. 14th Street

For Lease
\$13.50/SF NNN
1,613-2,060 SF

Sally DeLair

[Link to MRCIE #30479688](#)



Taylor Meadows Medical 1101 S. 70th Street

For Lease
\$12.50/SF NNN
3,347 SF

Marc Hausmann

[Link to MRCIE #30073277](#)



1111 Lincoln Mall

For Lease
\$10.00-\$17.00/SF NNN
989-11,850 SF

Sally DeLair/John Hyland

[Link to MRCIE #30337243](#)



Project Oscar 2.0 101 Canopy Street

For Lease
\$20.00-\$22.00/SF NNN
1,046-11,154 SF

Richard Meginnis/Sally DeLair

[Link to MRCIE #30345865](#)

Office Lease Listings

July 2020

[Return to Home Page](#)



Commerce Court 1230 'O' Street

For Lease
\$14.00/SF FS
1,049-12,881 SF

Tom Graf/Richard Meginnis

[Link to MRCIE #30060171](#)



Wells Fargo Center 1248 'O' Street

For Lease
\$20.00-\$22.00/SF FS
586-2,069 SF

Tom Graf/Richard Meginnis

[Link to MRCIE #30060791](#)



Meridian Park Office 6940 'O' Street

For Lease
\$20.00-\$21.00/SF FS
750-3,328 SF

Chris Vasek/Richard Meginnis

[Link to MRCIE #30060429](#)



Federal Trust Building 134 S. 13th Street

For Lease
\$14.50/SF MG
492-4,978 SF

Marc Hausmann/Scott Richardson

[Link to MRCIE #30060474](#)



Bryan East Medical Plaza 1500 S. 48th Street

For Lease
\$22.00/SF + Janitorial
1,104-4,950 SF

Mike Ball/Richard Meginnis

[Link to MRCIE #30060499](#)



Park One 2900 S. 70th Street

For Lease
\$16.00/SF NNN
1,799 SF

Tom Graf/Richard Meginnis

[Link to MRCIE #30060616](#)



300 S. 68th Street

For Lease
\$11.00/SF NNN
2,922-10,504 SF

Mike Ball/Scott Richardson

[Link to MRCIE #30060869](#)



5640 S. 84th Street

For Lease
\$16.00/SF NNN
2,735 SF

Tom Graf/Mattie Wenzl

[Link to MRCIE #30476936](#)

Office Lease Listings

July 2020

[Return to Home Page](#)



Bryan West Medical Plaza **2222 S. 16th Street**

For Lease
\$20.00-\$22.00/SF MG
3,872-4,883 SF

Mike Ball/Richard Meginnis

[Link to MRCIE #30058373](#)



U.S. Bank Tower **233 S. 13th Street**

For Lease
\$18.50/SF FS
430-4,612 SF

Sally DeLair/Marc Hausmann

[Link to MRCIE #30058798](#)



6201 Havelock Ave

For Lease
\$1,700/Month MG
1,500 SF

John Hyland

[Link to MRCIE #30626278](#)



570 Fallbrook Blvd.

For Lease
\$15.00-\$20.00/SF NNN
8,935 SF

Sally DeLair

[Link to MRCIE #30337123](#)



3901 Yankee Hill Road

For Lease
\$25.00/SF NNN
12,888 SF

Richard Meginnis

[Link to MRCIE #30597310](#)



Pine Lake Medical Plaza **3901 Pine Lake Road**

For Lease
\$22.00/SF MG
812-2,876 SF

Mike Ball/Richard Meginnis

[Link to MRCIE #30060502](#)



1120 P Street

For Lease
\$13.50/SF Modified Gross
1,300-2,700 SF

Chris Vasek/Mattie Wenzl

[Link to MRCIE #30577670](#)



4600 Valley Road

For Lease
\$12.00/SF NNN
200-2,224 SF

Marc Hausmann/Sally DeLair

[Link to MRCIE #30060780](#)

Office Lease Listings

July 2020

[Return to Home Page](#)



5055 'A' Street

For Lease
\$27.00/SF MG
3,368-17,514 SF

Mike Ball/Richard Meginnis

[Link to MRCIE #30060807](#)



575 Fallbrook Blvd.

For Lease
\$15.00/SF NNN
6,711 SF

Sally DeLair

[Link to MRCIE #30060567](#)



100 N. 56th Street

For Lease
\$16.50/SF NNN
3,026-26,400 SF

Sally DeLair/Marc Hausmann

[Link to MRCIE #30058312](#)



Legacy Square

8055-8101 'O' Street

For Lease
\$11.00-\$13.00/SF NNN
740-3,288 SF

Richard Meginnis/Tom Graf

[Link to MRCIE #30060853](#)



307 N. 46th Street

For Lease
\$13.50/SF NNN
3,348 SF

Tom Graf/Mattie Wenzl

[Link to MRCIE #30453979](#)



600 S 70th Street

Land Lease or Build to Suit
See agent for rate
40,000-80,000 SF

Marc Hausmann/Richard Meginnis

[Link to MRCIE #30554041](#)



2935 Pine Lake Rd, Suite E & F

For Lease
\$12.50/SF NNN
2,125-4,625 SF

Richard Meginnis/Jared Froehlich

[Link to MRCIE #30526129](#)



601 P Street

For Lease
\$19.00-\$20.00/SF NNN
3,410 SF

Richard Meginnis/Sally DeLair

[Link to MRCIE #30525948](#)

Office Lease Listings

July 2020

[Return to Home Page](#)



4600 Innovation Drive

For Lease
\$12.00/SF NNN
113,644 SF

Mattie Wenzl/Richard Meginnis

[Link to MRCIE #30385307](#)



141 S. 56th Street

For Lease
\$11.00/SF Modified Gross
940 SF

Jared Froehlich

[Link to MRCIE #30595428](#)



5945 Cornhusker Hwy

For Sublease
\$12.75/SF NNN
3,388 SF

Mike Ball

[Link to MRCIE #30174598](#)



1640 'L' Street

For Lease
\$6.00-\$9.00/SF NNN
879-6,000 SF

Scott Richardson/Marc Hausmann

[Link to MRCIE #30060792](#)



121 Cherry Hill Blvd

For Lease
\$11.00/SF NNN
3,671-9,546 SF

Tom Graf/John Hyland

[Link to MRCIE #30519909](#)



8025 Eiger Dr.

For Lease
\$18.00/SF NNN
1,638 SF

Mattie Wenzl

[Link to MRCIE #30472308](#)



Taylor Meadows Office Park 1001 S. 70th Street

For Lease
\$12.00/SF NNN
826-3,847 SF

Tom Graf/Marc Hausmann

[Link to MRCIE #30060781](#)



Sterling Summit 2611 & 2641 S. 70th Street

For Lease
\$13.00-\$13.50/SF NNN
2,972-6,212 SF

Sally DeLair/Marc Hausmann

[Link to MRCIE #30398186](#)

Office Lease Listings

July 2020

[Return to Home Page](#)



245 S. 84th Street

For Lease
\$10.75/SF NNN
924-3,969 SF
Scott Richardson/Chris Vasek
[Link to MRCIE #30189674](#)



110 S. 14th Street

For Lease
\$13.25/SF Gross
174-1,157 SF
Tom Graf/John Hyland
[Link to MRCIE #30582950](#)



127 S. 37th Street

For Lease
\$13.75/SF NNN
2,635 SF
Scott Richardson
[Link to MRCIE #30506222](#)



Sterling Summit 2621 S. 70th Street

For Lease
\$13.00/SF NNN
2,800 SF
Sally DeLair/Marc Hausmann
[Link to MRCIE #30398181](#)



610 J Street

For Lease
\$16.50/SF MG
1,070-1,287 SF
Marc Hausmann/Sally DeLair
[Link to MRCIE #30625505](#)



7555 S. 57th Street, Unit 2A

For Lease
\$14.00/SF NNN
2,084 SF
Marc Hausmann/Sally DeLair
[Link to MRCIE #30625324](#)



600 P Street

For Sublease
\$18.00/SF NNN
5,649 SF
Richard Meginnis/Sally DeLair
[Link to MRCIE #30614694](#)



555 W South Street

For Lease
\$10.00/SF NNN
2,350 SF
Mattie Wenzl/Chris Vasek
[Link to MRCIE #30622550](#)

Retail Lease Listings

July 2020

[Return to Home Page](#)



6940 'A' Street

For Sale or Lease
\$12.00/SF NNN
7,536 SF

Richard Meginnis/Mattie Wenzl

[Link to MRCIE #30509619](#)



Belmont Shopping Center 2541 N. 11th Street

For Lease
\$10.00/SF NNN
1,728 SF

Mike Ball/Mattie Wenzl

[Link to MRCIE #30060846](#)



201 Capitol Beach

For Lease
\$10.00-\$12.00/SF NNN
750-1,590 SF

Scott Richardson/Marc Hausmann

[Link to MRCIE #30060713](#)



Crossroads Center 233 N. 48th Street

For Lease
\$14.00/SF NNN
1,026-2,124 SF

Scott Richardson/Mike Ball

[Link to MRCIE #30059629](#)



5012 N. 27th Street

For Lease
\$22.00/SF NNN
2,740 SF

Jared Froehlich

[Link to MRCIE #30624630](#)



5505 'O' Street

For Lease
\$15.00/SF NNN
968-1,370 SF

Sally DeLair

[Link to MRCIE #30217025](#)



5050 Old Cheney Road

For Lease
\$7.00/SF NNN
10,200 SF

Tom Graf/Scott Richardson

[Link to MRCIE #30288872](#)



6600 N. 27th Street

For Lease
\$12.00/SF NNN
4,300 SF

Mattie Wenzl/Marc Hausmann

[Link to MRCIE #30166444](#)

Retail Lease Listings

July 2020

[Return to Home Page](#)



Meridian Park Retail 6900 'O' Street

For Lease
\$10.00-\$13.00/SF NNN
1,200-7,260 SF

Sally DeLair/Mattie Wenzl
[Link to MRCIE #30060444](#)



5611 NW. 1st Street

For Lease
\$13.50/SF NNN
1,315 SF

Mattie Wenzl/Chris Vasek
[Link to MRCIE #30561359](#)



2655 S. 70th Street

For Lease
\$16.00/SF NNN
1,400 SF

Sally DeLair/Marc Hausmann
[Link to MRCIE #30506535](#)



2949 N. 27th Street

For Lease
\$15.00/SF NNN
5,065 SF

Mike Ball/Scott Richardson
[Link to MRCIE #30593388](#)



1400 N. 48th Street

For Lease
\$11.75/SF NNN
3,200 SF

Mike Ball
[Link to MRCIE #30138775](#)



Heritage Park 5500-5600 S. 59th Street

For Lease
\$10.00-\$12.00/SF NNN
1,150-4,146 SF

Chris Vasek/Marc Hausmann
[Link to MRCIE #30060545](#)



1745 'O' Street

For Lease
\$14.00/SF NNN
1,256-4,788 SF

Marc Hausmann/Sally DeLair
[Link to MRCIE #30514144](#)



2125 Winthrop Rd.

For Lease
\$10.50/SF NNN
1,200SF

Chris Vasek/Mattie Wenzl
[Link to MRCIE #30555244](#)

Retail Lease Listings

July 2020

[Return to Home Page](#)



The Shoppes at Piedmont **1265 S. Cotner Blvd.**

For Lease
\$13.00/SF NNN
1,447 SF

Sally DeLair/Scott Richardson

[Link to MRCIE #30552559](#)



2240 Fletcher Ave

For Lease
\$8.00-\$10.00/SF NNN
1,575-12,000 SF

Sally DeLair/Marc Hausmann

[Link to MRCIE #30526004](#)



2810 Cornhusker Hwy.

For Lease
\$18.00/SF NNN
4,173 SF

Sally DeLair/Marc Hausmann

[Link to MRCIE #30622742](#)

Industrial Lease Listings

July 2020

[Return to Home Page](#)



5711 Russell Dr.

For Lease
\$6.25/SF NNN
7,000 SF

Chris Vasek

[Link to MRCIE #30473376](#)



2100 Magnum Circle

For Lease
\$4.50/SF NNN
3,137 SF

Chris Vasek/Mattie Wenzl

[Link to MRCIE #30283836](#)



4800 Doris Bair Circle

For Lease
\$5.75/SF NNN
10,000 SF

Chris Vasek

[Link to MRCIE #30555294](#)



6000 N. 60th Street

For Lease
\$4.50/SF NNN
65,000 SF (can be subdivided)

Chris Vasek

[Link to MRCIE #30149339](#)



2135 Cornhusker Hwy

For Lease
\$5.50/SF NNN
1,500-25,000 SF

Chris Vasek

[Link to MRCIE #30359160](#)



4840 Doris Bair Circle

For Lease
\$6.25/SF NNN
10,500 SF

Chris Vasek

[Link to MRCIE #30509169](#)



1323 Dawes Ave.

For Lease
\$3,000/Month MG
4,500 SF

Marc Hausmann/Sally DeLair

[Link to MRCIE #30628173](#)



1079 Garber Ave

For Sale
\$3.25/SF
34,125 Square Feet

Mike Ball

[Link to MRCIE #30285415](#)



5575 S. 27th Street

For Sale
\$360,000
1.11 Acres

Chris Vasek/Richard Meginnis

[Link to MRCIE #30056911](#)



1340, 1350, 1360 W. A Street

For Sale
\$155,550-\$164,225
4,006-,4354 BSF

Mike Ball/Richard Meginnis

[Link to MRCIE #30484676](#)



1850 Union Road Grand Island, NE

For Sale
\$125,000-\$175,000
0.95-1.18 Acres

Marc Hausmann/Sally DeLair

[Link to MRCIE #30056373](#)



2301 Whitehead Drive

For Sale
\$1,999,800
20.22 Acres

Chris Vasek

[Link to MRCIE #30056768](#)



500 W. Cornhusker Hwy.

For Sale
\$116,750
14,997 SF

Scott Richardson

[Link to MRCIE #30509201](#)



I-80, Exit 420

For Sale
Call For Offers
69± Acres

Marc Hausmann/Jared Froehlich

[Link to MRCIE #30611045](#)



177 W. South St.

For Sale
\$790,000
21.89 Acres

Sally DeLair/Marc Hausmann

[Link to MRCIE #30531256](#)



14905 US 6 Waverly, NE

For Sale
\$10,419,500
160.02 Acres
Marc Hausmann

[Link to MRCIE #30522943](#)



4800 W. O Street

For Sale
\$3,400,000
23.48 Acres
Tom Graf/Richard Meginnis

[Link to MRCIE #30522927](#)



643 N. 45th Street

For Sale
\$325,000
10,000 Buildable SF
Mike Ball

[Link to MRCIE #30562473](#)



471 N. 66th Street

For Sale
Call For Offers
.25 Acres
Sally DeLair/Marc Hausmann

[Link to MRCIE #30567122](#)



6200 Fletcher Ave

For Sale
\$1,091,178
5.01 Acres
Chris Vasek

[Link to MRCIE #30566978](#)

The Team

July 2020

[Return to Home Page](#)



Drew Stange, CCIM
CEO, Broker
dstange@naifma.com
(402) 441-5808



Richard Meginnis, SIOR
President
rmeginnis@naifma.com
(402) 441-5828



Mike Ball
Vice President, Sales & Leasing
mball@naifma.com
(402) 441-5807



Chris Vasek, SIOR
Senior Associate Broker
cvasek@naifma.com
(402) 441-5833



Sally DeLair
Sales Associate
sdelair@naifma.com
(402) 441-5822



Mattie Wenzl
Sales Associate
mwenzl@naifma.com
(402) 441-5810



Tom Graf, CCIM
Sales Associate
tgraf@naifma.com
(402) 441-5823



Marc Hausmann, CCIM
Associate Broker
mhausmann@naifma.com
(402) 441-5834



Scott Richardson
Sales Associate
srichardson@naifma.com
(402) 441-5814



Jared Froehlich
Sales Associate
jfroehlich@naifma.com
(402) 441-5830



John Hyland
Sales Associate
jhyland@naifma.com
(402) 441-5819